



Manifold Cabinet

Installation manual



Warmup®

The world's best-selling floor heating brand™

Over 2.7 million installations
in more than 72 countries

Experience MyHeating™



SmartGeo™

Unique SmartGeo™ automatically turns down the heating when you're out.



Easy to use

Simple and secure setup using WiFi, with 24/7 technical support.



AutoSwitch™

Always on the best tariff, automatically. Reduce energy bills by over £400

Download now for iOS and Android



6iE OB WiFi Thermostat



Table of Contents

Installation summary	4
Cabinet overview	6
Important installation information	8
Components available from Warmup	9
Typical installation	10
Stud partition wall	10
Solid wall	12
Cabinet installation options	14
Step 1 - Installation preparation	16
Step 2 - Mount the cabinet	17
Step 3 - Install manifold and controls	18
Technical specifications	20
Warranty	22

It is important that the instructions in this manual are followed to ensure correct installation of your product. Please ensure that you have the necessary components for this product before you begin installation.

Warmup plc accepts no liability, expressed or implied, for any loss or consequential damage suffered as a result of installations which in any way contravene the instructions that follow.

It is important that before, during and after installation that all requirements are met and understood. If the instructions are followed, you should have no problems. If you require help at any stage, please contact our helpline.

You may also find a copy of this manual and other helpful information on our website

www.warmup.co.uk

Installation summary

Please also read the full instructions that follow this section.



- Construct your wall so that the manifold cabinet can be properly recessed and secured into it.
- Ensure the wall the manifold cabinet is being installed into is structurally sound and will not be compromised by its installation.



- Unpack your manifold cabinet. Do not remove the brace from the cabinet as this will help prevent cabinet deformation during installation.



- Adjust the height of the cabinet legs to match the necessary height of your installation.
- Consideration should be given to the frames position on the finished wall. See "*Cabinet installation options*" page.



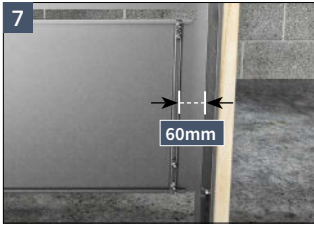
- Secure the cabinet to the wall.



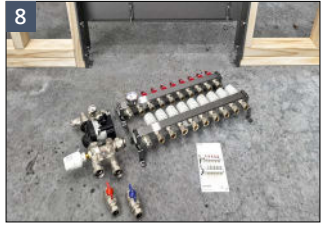
- Remove the brace rail



- Install the primary pipework. If primary pipework enters the cabinet from the top or sides, remove the knock-outs as required to gain entry.



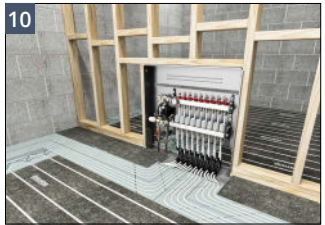
- Fix the right-hand rail 60mm in from the side of the cabinet



- Assemble the manifold in accordance with its installation manual.



- Loosely mount the manifold and mixing unit onto the right hand rail then position and affix the left hand rail.



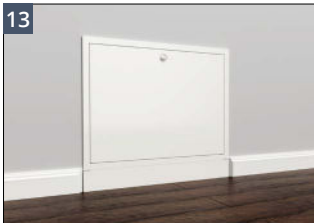
- Connect all primary and secondary pipes and pressure test in accordance with the manifold manual.



- Install the wiring centre as per its instructions and commission the system.



- Fit the cabinet plinth and frame once the wall finish and skirting has been completed.



- Fit the cabinet door, mounting over the studs in the frame and latch closed.

Cabinet overview

Manifold mounting rails

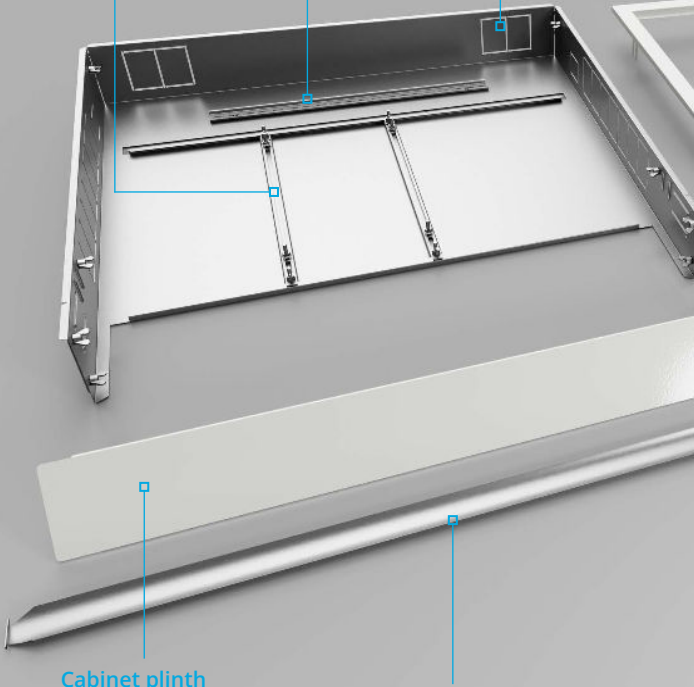
For mounting the Warmup S3 manifold.

DIN Rail

To attach a wiring centre.

Pipe/cable knockouts

Located on top of cabinet and both sides. To be removed where primary pipework/cable is fed into the cabinet.



Cabinet plinth

Removing the plinth can provide an extra 110mm space between the door frame and the supporting floor.

Mounting brace

Helps prevent cabinet deformation during cabinet mounting. To be removed after installation of the cabinet.

Adjustable fame

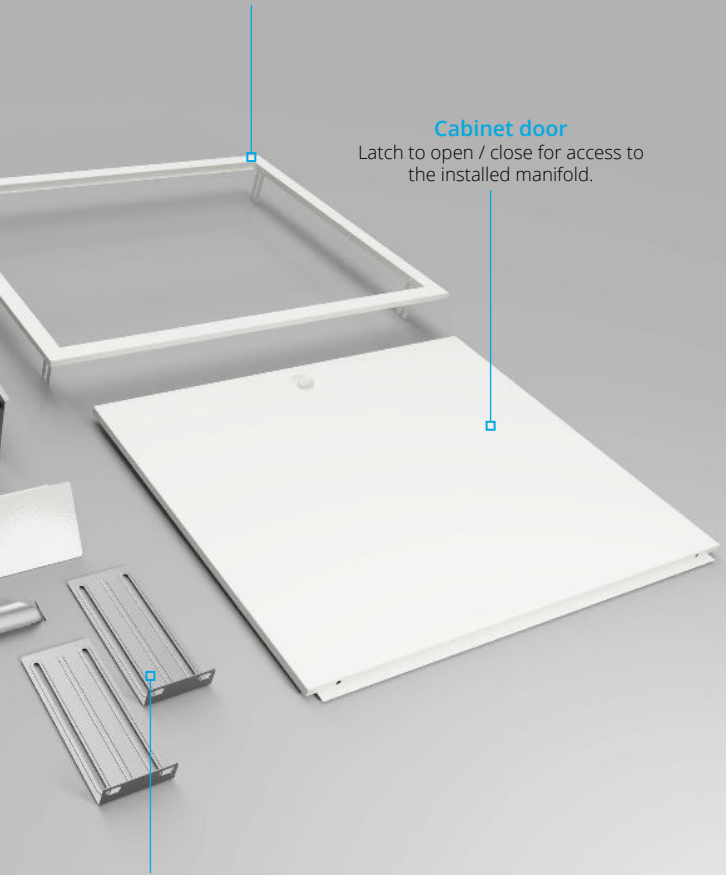
Can be adjusted between 0 - 30mm from the cabinet box.

Cabinet door






Latch to open / close for access to the installed manifold.

Adjustable legs

The cabinet legs can be adjusted between 0 - 180mm height.



Important installation information

-  Ensure the wall the manifold cabinet is being installed into is structurally sound and will not be compromised by its installation.
-  Safety gloves must be worn. While all efforts have been made to ensure there no burrs or sharp edges, the cabinets are made from stamped steel, therefore there may be some sharp edges.
-  Ensure the brace is not removed until the cabinet is securely mounted in the wall to minimise cabinet deformation during install.
-  For installations using the Warmup S3 Mixing Unit the cabinets frame and door must extend 25mm from the cabinet box. For thin walls this may require a 25mm batten between the cabinet frame and box, mounted on the wall surface.
-  If required, clean the cabinets with a damp cloth and towel dry. DO NOT use corrosive chemicals.

Components available from Warmup

Product Code

ACC-cabinet1050
1050mm wide cabinet



ACC-cabinet900
900mm wide cabinet



ACC-cabinet750
750mm wide cabinet



ACC-cabinet600
600mm wide cabinet



Additional components that may be required as part of your Warmup heating installation:

UFH Wiring Centre

S3 Manifold

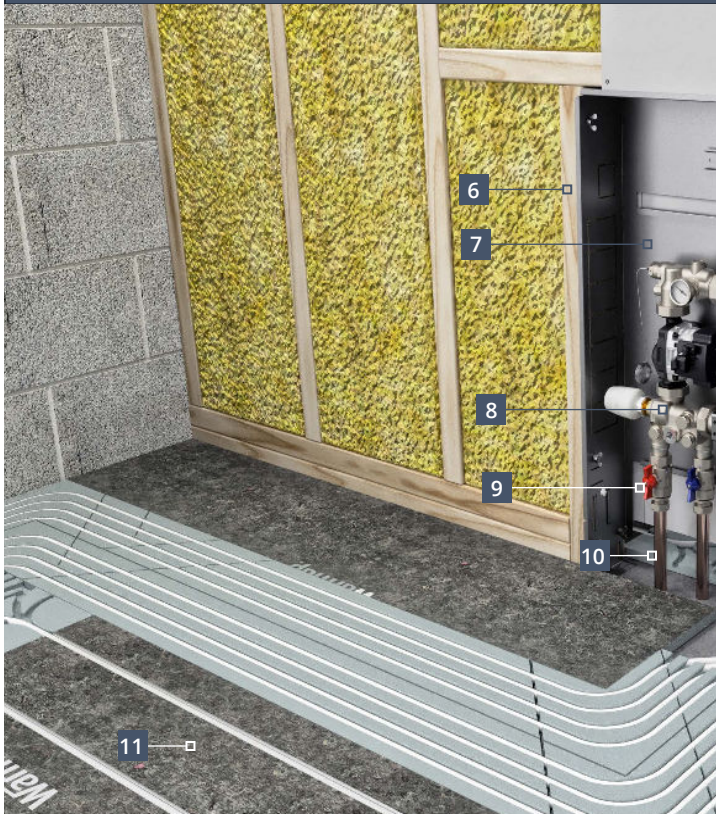
S3 Mixing Unit

S3 Isolation Valves

Pipe connectors

Typical installation

Stud partition wall



1 Plasterboard

2 UFH Wiring Centre

3 Warmup S3 Manifold

4 Manifold mounting rails
To be installed 60mm in from right-hand edge.

5 Secondary pipework

6 Studwork frame
For mounting and securing the manifold cabinet.

7 Manifold cabinet box
Cabinet frame, plinth and door to be fitted after wall finish and skirting has been completed.

8 S3 Mixing Unit

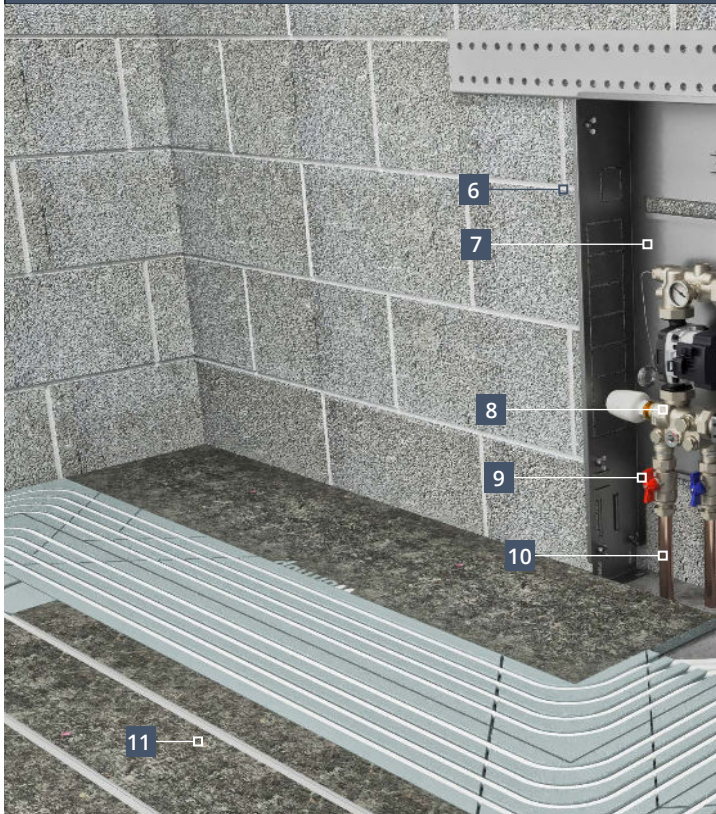
9 S3 Isolation valves

10 Primary pipework

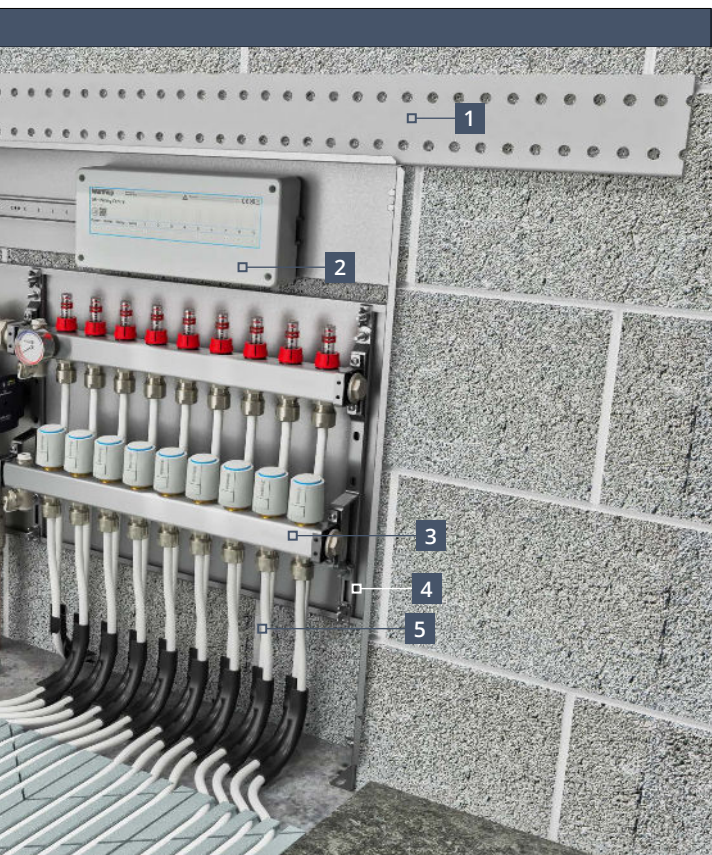
11 Underfloor heating system

Typical installation

Solid wall



- 1** Structural lintel (if required)
The wall the manifold cabinet is being installed must be structurally sound and not be compromised by its installation.
- 2** UFH Wiring Centre
- 3** Warmup S3 Manifold
- 4** Manifold mounting rails
To be installed 60mm in from right-hand edge.
- 5** Secondary pipework
- 6** Solid wall
Wall to be chased to a depth that will accommodate the manifold cabinet box.
- 7** Manifold cabinet box
Cabinet frame, plinth and door to be fitted after wall finish and skirting has been completed.
- 8** S3 Mixing Unit
- 9** S3 Isolation valves
- 10** Primary pipework
- 11** Underfloor heating system



Cabinet installation options



- Cabinet with plinth on at floor level.



- Cabinet with plinth on at floor level. If the frame is extended to its maximum capacity and where the wall lacks the necessary depth to accommodate this then a timber batten can be installed around the cabinet perimeter.



- Cabinet with plinth on raised over skirting board.



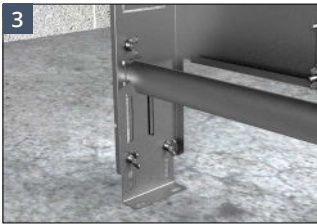
- Removing the plinth can provide an extra 110mm between the cabinet door frame and the supporting floor. Therefore up to 290mm space is available beneath the cabinet for skirting board or other items.

Step 1 - Installation preparation



- Construct your wall such that the manifold cabinet can be properly recessed and secured into it.
- Ensure the wall the manifold cabinet is being installed into is structurally sound and will not be compromised by its installation.

- Unpack your manifold cabinet. Do not remove the brace from the cabinet as this will help prevent cabinet deformation during installation.



- Adjust the height of the cabinet legs to match the necessary height of your installation.
- Consideration should be given to the frames position on the finished wall. See previous page, *"Cabinet installation options"*.

Step 2 - Mount the cabinet



- Drill fixing holes through the cabinet at locations shown, either side of the cabinet. Holes should be sized depending on fixings used.



- Secure the cabinet to the wall using wood screws.



If installing the manifold cabinet into a solid wall use wall plugs and screws.

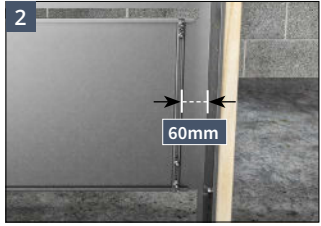


- Remove brace rail

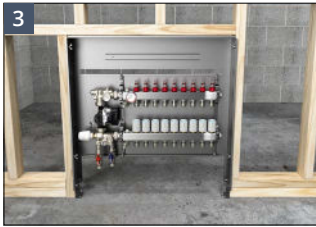
Step 3 - Install manifold and controls



- Assemble the manifold in accordance with its installation manual.



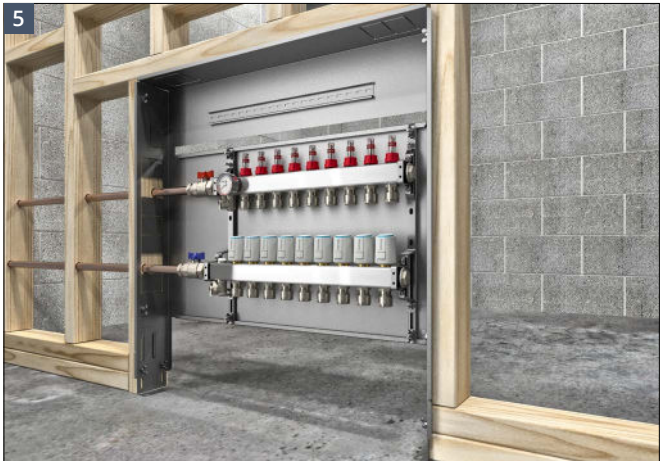
- Fix the right-hand rail 60mm in from the side of the cabinet.



- Mount the manifold onto the right hand rail at its highest possible position. Align the left hand rail to the manifold's left bracket then affix in position.

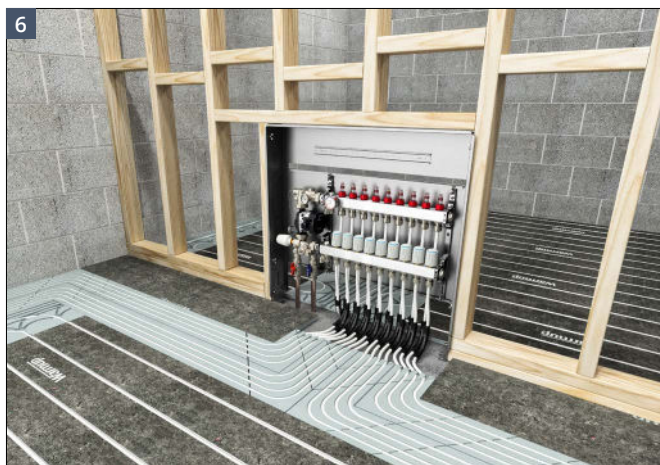


- If required, measure out the primary pipework and mark the penetrations through the cabinet.

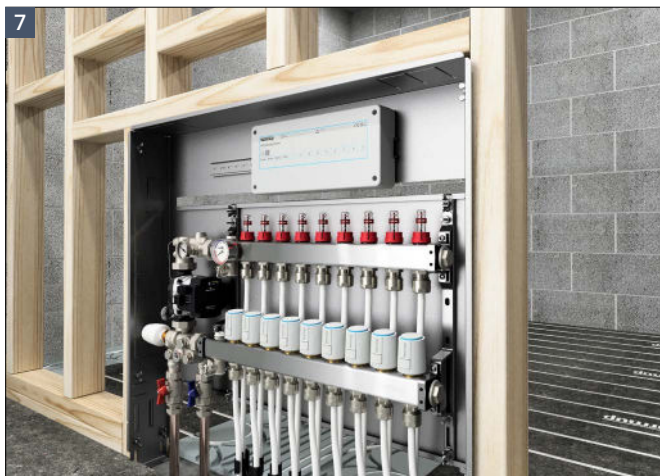


- Remove the manifold from the cabinet.
- Install the primary pipework. If primary pipework enters the cabinet from the top or sides, remove the knock-outs as required to gain entry.
- Re-mount the manifold and connect the primary pipework.

Step 3 - Install manifold and controls



- Connect all secondary pipes and pressure test in accordance with the manifold manual.
- Secondary pipes can be brought in from the front or the rear.



- Install the wiring centre as per its instructions and commission the system

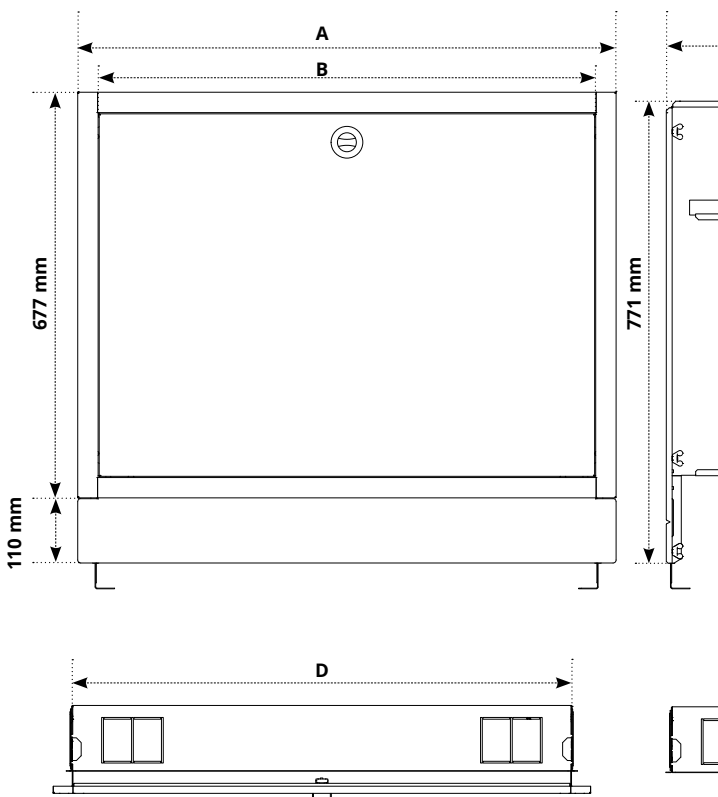


- Fit the cabinet plinth and frame once the wall finish and skirting has been completed.

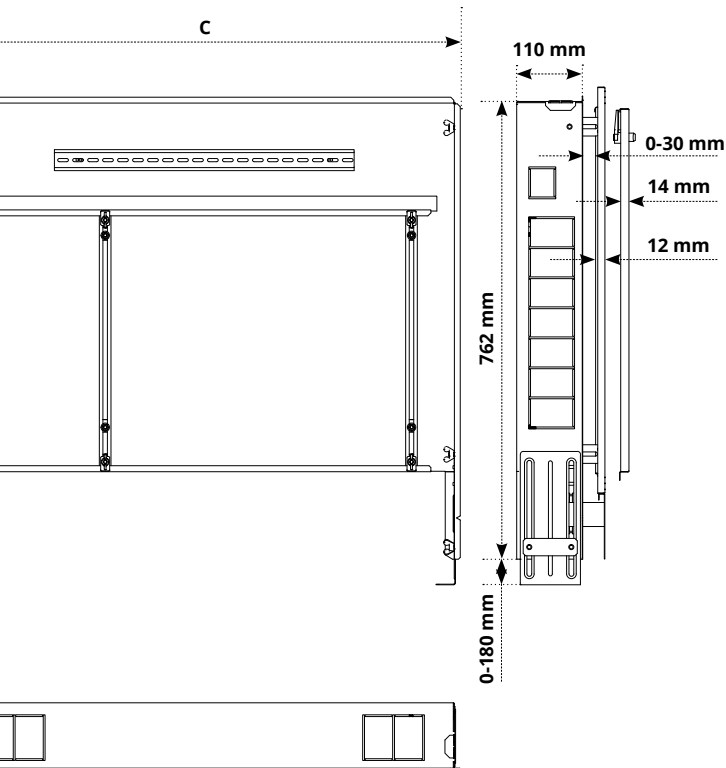


- Fit the cabinet door, mounting over the studs in the frame and latch closed.

Technical specifications



Code	ACC-cabinet600	ACC-cabinet750
A	598	748
B	526	676
C	554	704
D	542	692
Cabinet suitability with / without S3 Mixing Unit	2-3 Port	4-6 Port
Finish	Powder coat; RAL9016 frame, door and plinth	
Material	Galvanised steel	
Lockable	No	
Mounting brace	Yes	



ACC-cabinet900

ACC-cabinet1050

898	1048
826	976
854	1004
841	992
7-9 Port	10-12 Port

Warranty

Warmup plc 2 year limited warranty



In the event of a claim, proof of purchase is required in the form of an invoice or receipt.

THIS WARRANTY DOES NOT EXTEND TO OTHER COMPONENTS WHICH ARE COVERED BY SEPARATE WARRANTIES. THIS WARRANTY DOES NOT AFFECT YOUR STATUTORY RIGHTS.

Limited warranty:

Warmup® manifold cabinets are warranted by Warmup plc ("Warmup") to be free from defects in manufacturing under normal use and maintenance, and is warranted to remain so subject to the limitations and conditions described below.

This warranty period begins on the date of purchase.

Warranty duration

- The manifold cabinets are warranted for 2 years, except as provided below; your attention is drawn to the exclusions listed and the end of this warranty.

Notification of a suspected failure must be received in writing by Warmup within thirty (30) days of the suspected failure. Products believed to be defective must be made available to Warmup for testing and determination of cause.

Upon acceptance of any warranty claim, Warmup shall have ninety (90) business days in which to investigate and determine whether it recognises responsibility for any believed defects in material or workmanship and determines the appropriate course of action to be taken.

It is expressly agreed that the sole remedies under this limited warranty shall be at the discretion of Warmup, plc to either: issue a refund, repair or replace any article which is proven to be defective. Any and all allowances made to customers for transportation, labour, repairs or all other work, are at the exclusive discretion of Warmup and shall be authorised in writing, in advance, by Warmup. Such cost does not extend to any cost other than direct costs of repair or replacement by Warmup and does not extend to costs of repairing or re-fitting any other products or materials.

The 2-year warranty applies to the cabinet if they:

1. Are installed according to all applicable building code requirements.
2. Are selected, designed and installed by a qualified contractor according to installation instructions provided by Warmup which are current as of the applicable installation date.
3. Do not show evidence of water or chemical damage.
4. Do not show evidence of accidental damage, misuse, lack of care, tampering, or repair or modification without the prior written approval of Warmup plc.



Warmup plc

www.warmup.co.uk

uk@warmup.com

T: 0345 345 2288

F: 0345 345 2299



**Please scan the QR code to provide
feedback on your installation**

Warmup

The WARMUP word and associated logos are trade marks.
© Warmup Plc. 2023 - Regd.™ Nos. 1257724, 4409934, 4409926,
5265707. E & OE.

Warmup plc ■ 704 Tudor Estate ■ Abbey Road ■ London ■ NW10 7UW ■ UK
Warmup GmbH ■ Ottostraße 3 ■ 27793 Wildeshausen ■ DE

Warmup - IM - ACC-cabinet - V1.2 - 2024-04-02_EN